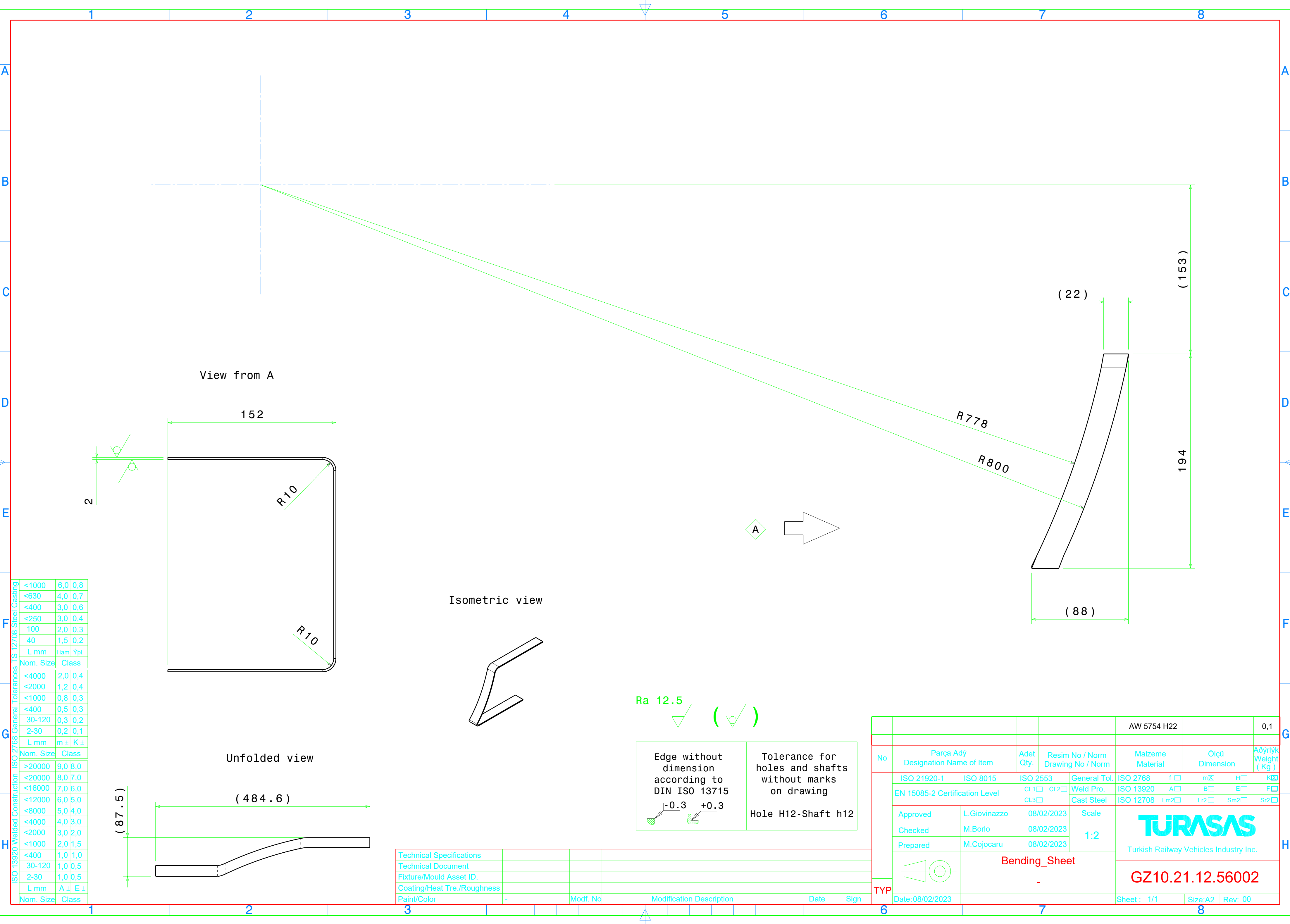


Reproduction, dissemination or use of this document or its all contents in any form without the prior written permission of TURASAS, is prohibited. Offenders will be liable for the payment of damages. All rights reserved in the event of the grant of a patent, utility model or industrial design registration.



ISO 13920 Welded Construction	<1000	6,0	0,8
	<630	4,0	0,7
ISO 2768 General Tolerances	<400	3,0	0,6
	<250	3,0	0,4
ISO 13920 Welded Construction	100	2,0	0,3
	40	1,5	0,2
ISO 2768 General Tolerances	L mm	Ham	Ypl.
	Nom. Size	Class	
ISO 13920 Welded Construction	<4000	2,0	0,4
	<2000	1,2	0,4
ISO 2768 General Tolerances	<1000	0,8	0,3
	<400	0,5	0,3
ISO 13920 Welded Construction	30-120	0,3	0,2
	2-30	0,2	0,1
ISO 2768 General Tolerances	L mm	m ±	K ±
	Nom. Size	Class	
ISO 13920 Welded Construction	>20000	9,0	8,0
	<20000	8,0	7,0
ISO 2768 General Tolerances	<16000	7,0	6,0
	<12000	6,0	5,0
ISO 13920 Welded Construction	<8000	5,0	4,0
	<4000	4,0	3,0
ISO 2768 General Tolerances	<2000	3,0	2,0
	<1000	2,0	1,5
ISO 13920 Welded Construction	<400	1,0	1,0
	30-120	1,0	0,5
ISO 2768 General Tolerances	2-30	1,0	0,5
	L mm	A ±	E ±
ISO 13920 Welded Construction	Nom. Size	Class	


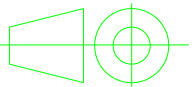
Technical Specifications					
Technical Document					
Fixture/Mould Asset ID.					
Coating/Heat Tre./Roughness					
Paint/Color	-	Modif. No	Modification Description	Date	Sign

Edge without dimension according to DIN ISO 13715

$\sqrt{0.3}$ $\sqrt{0.3}$

Tolerance for holes and shafts without marks on drawing

Hole H12-Shaft h12

				AW 5754 H22		0,1			
No	Parça Adý Designation Name of Item	Adet Qty.	Resim No / Norm Drawing No / Norm	Malzeme Material	Ölçü Dimension	Ağırlık Weight (Kg)			
TYP	ISO 21920-1	ISO 8015	ISO 2553	General Tol.	ISO 2768	f <input type="checkbox"/>	mX <input checked="" type="checkbox"/>	H <input type="checkbox"/>	K <input checked="" type="checkbox"/>
	EN 15085-2 Certification Level		CL1 <input type="checkbox"/> CL2 <input type="checkbox"/> CL3 <input type="checkbox"/>	Weld Pro.	ISO 13920	A <input type="checkbox"/>	B <input type="checkbox"/>	E <input type="checkbox"/>	F <input type="checkbox"/>
				Cast Steel	ISO 12708	Lm2 <input type="checkbox"/>	Lr2 <input type="checkbox"/>	Sm2 <input type="checkbox"/>	Sr2 <input type="checkbox"/>
	Approved	L.Giovinazzo	08/02/2023	Scale	<div></div> <div>Turkish Railway Vehicles Industry Inc.</div> <div>GZ10.21.12.56002</div>				
	Checked	M.Borio	08/02/2023	1:2					
	Prepared	M.Cojocar	08/02/2023						
			Bending_Sheet						
Date:08/02/2023				Sheet : 1/1		Size:A2	Rev: 00		